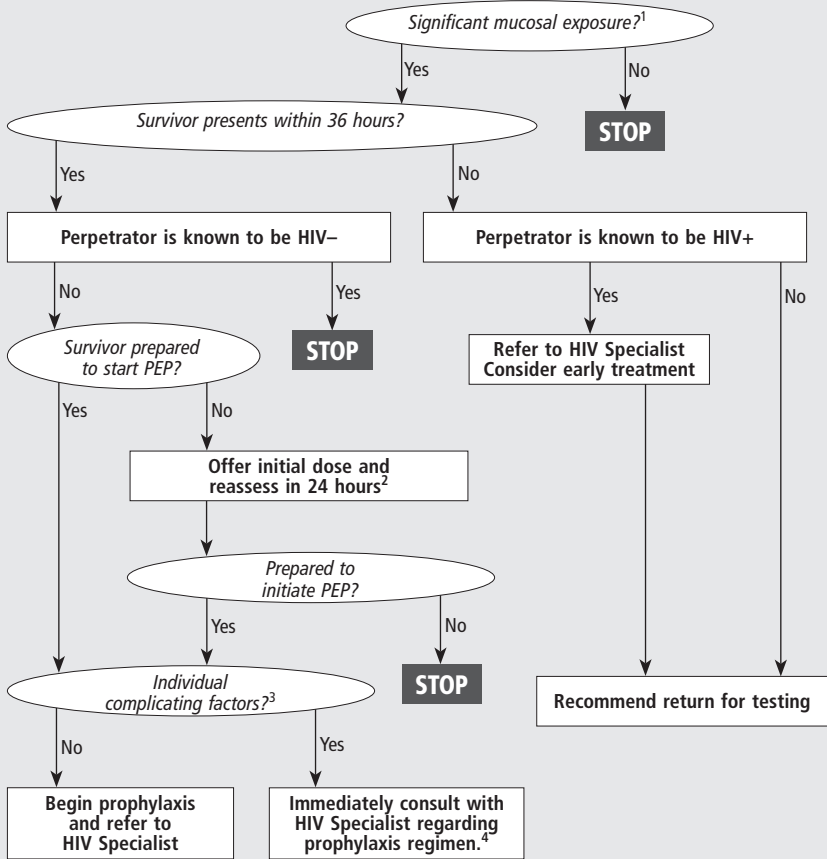


HIV POSTEXPOSURE PROPHYLAXIS ALGORITHM: SEXUAL ASSAULT



NOTES

- ¹Defined by direct contact of the vagina, anus or mouth with the semen or blood of the perpetrator with or without physical injury, tissue damage, or presence of blood at the site of the assault.
- ²Prophylaxis should be initiated within 36 hours of the assault.
- ³Complicating factors: pregnancy; other medical conditions; drug interactions.
- ⁴If Specialist not available on site, 24-hour consultation information available at www.hivguidelines.org

REFERENCES

Source: New York State Department of Health. www.hivguidelines.org
 Available at: <http://www.hivguidelines.org/clinical-guidelines/post-exposure-prophylaxis/hiv-prophylaxis-for-victims-of-sexual-assault/> (Rev. 4/2016)